



**Finance
Strategic
Transformation**

Fiscal Administrators Meeting

November 2, 2022



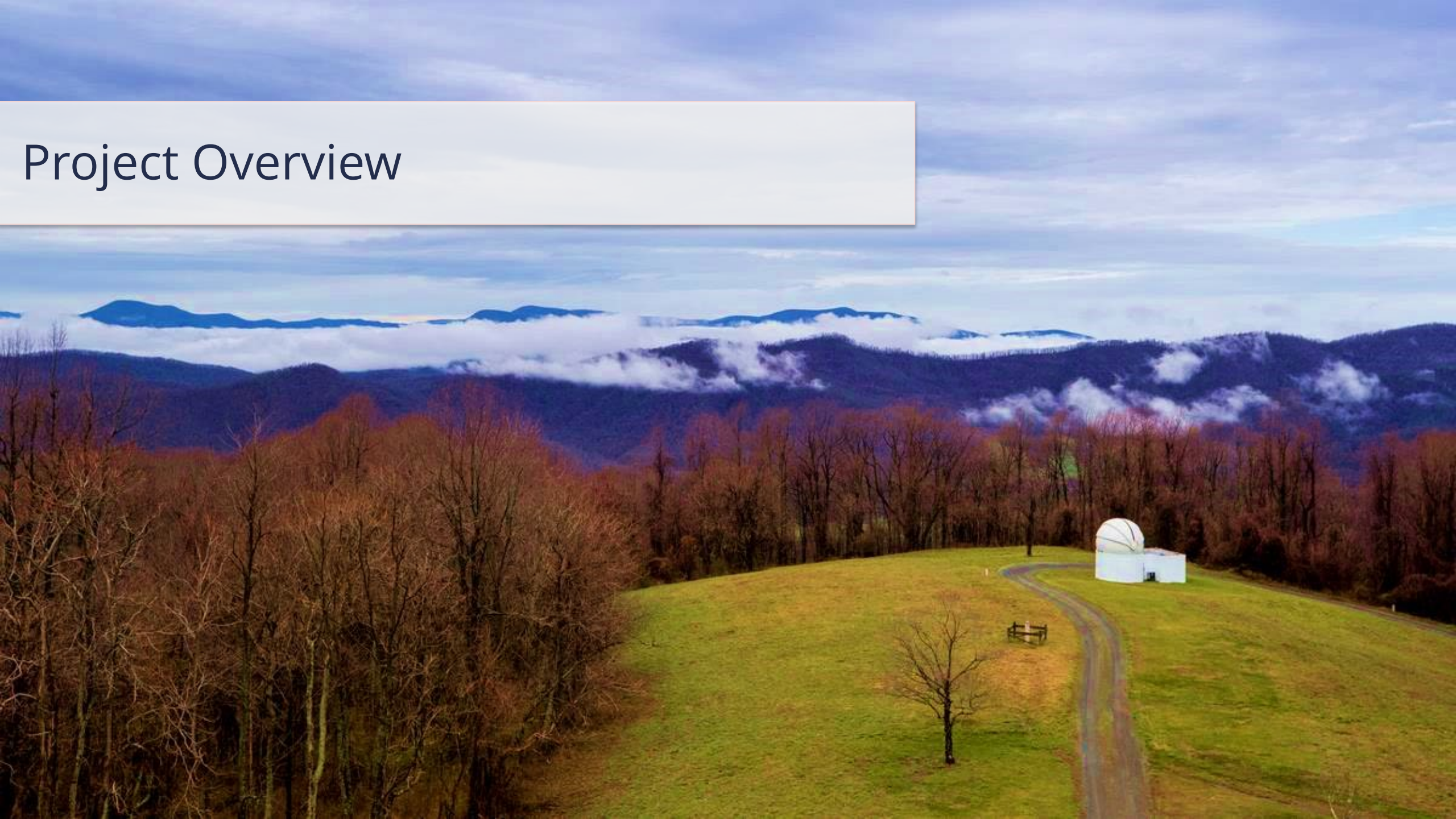
**UNIVERSITY
of
VIRGINIA**



Fiscal Administrators | 11/2/22 Agenda

Topic	Today's Agenda Item / Objective	Target Time
Welcome	<ul style="list-style-type: none"> • Welcome/Agenda Overview • Project Overview 	10 min
Top of Mind Discussion	<ul style="list-style-type: none"> • Key Items <ul style="list-style-type: none"> • Purchase Orders & Invoices • Fund Balances • Reporting • Account Certification • AskFinance 	45 min
Compliance Helpline	<ul style="list-style-type: none"> • Overview & Resources 	10 min
Looking Forward: Stabilization Updates	<ul style="list-style-type: none"> • Non-Catalog Requisition – Proposing New Changes • Deferred Items • Stakeholder Adoption <ul style="list-style-type: none"> • Adoption Assessment – Key Takeaways • Office Hours Recap & What's Next • New and Updated Resources 	15 min
Other Business and Wrap-Up	<ul style="list-style-type: none"> • Final Q&A 	10 min

Project Overview



Project Overview | FST Journey & What's Next

Throughout the Stabilization period, the project team's primary areas of focus have shifted to conducting **knowledge transfer**, looking at ways to enhance **ongoing end user support**, ironing out **known issues**, and ensuring the support team is **prepared for the future state**.

Adopting Workday Financials and adapting to the new processes and responsibilities that come along with this **transformation** is an ongoing process – one that requires continued support and collaboration as we move through our **individual and collective change journeys**. We continue to look to our **School and Unit leaders and stakeholders** to serve as our eyes and ears, providing feedback about the end user experience that **drives our efforts to continuously improve the adoption experience**.

Thank you for your hard work and commitment – this transformation would not be possible without each of you.





Top of Mind Discussion

Top of Mind Discussion | Overview

Over the next 45 minutes, we aim to **elevate the top-of-mind items** that we have gleaned from meetings and discussions with stakeholders, **share related resources and guidance**, and **gain a better understanding of additional questions or challenges** that stakeholders are facing related to the following items:

- Purchase Orders & Invoices
- Fund Balances
- Reporting
- Account Certifications
- AskFinance

For each of these topics, we will hear from a **subject matter expert** about top-of-mind items, resources, and guidance, and then will use **Mentimeter polling** to hear from you about additional top-of-mind items, challenges, or questions related to these areas. We encourage you to **share your questions and feedback**.

Purchase Orders & Invoices

Top of Mind Discussion | Purchase Orders & Invoices

Top of mind items/questions from stakeholders related to Spend:

1. Shipments sent to the wrong “**ship-to**” address (Purchase Requisitions)
2. **Old Purchase Orders** that were not converted
 - Process of **closing purchase orders**
 - Old purchase orders **not converted** resulting in **inability to view them in Workday**
3. **Match exceptions** issues that lead to vendors not getting paid
4. Incorporation of **discounts into purchase orders**

Resources & Guidance

Ship-To Address:

- [Change My Work Space / Correct Deliver-to Location QRG](#) – helps users set their address to the correct location and avoid errors in the future

Old Purchase Orders:

- [Change Purchase Order QRG](#) – walks users through the Create Change Order task, including changes to quantity, cost, Worktags, etc.

Match Exceptions:

- View match exceptions from notifications or by running the Find Supplier Invoice report and filtering by Cost Center and exception
- Investigate and identify the reason for the exception by drilling into invoice lines and reviewing all attachments and original documentation
- For POs: Submit a [change order request](#) as long as there isn't an invoice already applied to the Purchase Order; this can be used to update the quantity, cost, or worktag information. If you need to add or remove a line or cancel a PO, contact askfinance@virginia.edu
- For Invoices: Contact askfinance@virginia.edu and submit the [invoice correction form](#) if you need to cancel, add, or completely change an invoice
- [Match Exceptions FAQ](#) – contains frequently asked questions pertaining to Match Exceptions
- [Match Exception Investigation and Correction QRG](#) – walks users through the investigation of a supplier invoice match exception, and helps to determine the cause of the exception and initiate the correction for the match exception



**We will be using the
Mentimeter app to capture
some of your responses today**

Scan the QR code with your
smart phone camera to respond

OR

Go to www.menti.com and
enter the code **7777 8277**

Note: When putting in the code above, remember to
put the space in between.



Fund Balances

Top of Mind Discussion | Fund Balances

Top of mind items/questions from stakeholders related to Fund Balances:

1. Confusion around **following fund balance realignments**, especially when a charge on a project goes in and out to eventually get to **another DN/GF**
2. **Inaccurate fund balances if Schools/Units didn't participate** in the fund balance realignment activities; it was optional but has a significant **downstream impact** and makes it **difficult for faculty to know their balances**
3. Need for simple report that allows faculty to see their **balances by account and research grant**
4. Uncertainty around which reports to utilize in support of monthly balance; in some cases, the **Fund Balance by Cost Center, the Trial Balance by Cost Center, and the Budget versus Actuals** reports **reflect differing ending balances**
5. Confusion around how **balance sheet items** are, or are not, to be **pushed to the Cost Center level**; impacting **development of various reports**
6. Some of the areas of **unknowns related conversion of the balance sheet activity** at the **Cost Center level** for its programs/processes include:
 - SIS student billed receivables (ledger 1301)
 - Accrued Payroll (ledger 2010)
 - Accrued Payroll withholdings (ledger 2011)
 - State and Local Taxes Payable (ledger 2020)
 - Internal Lending Program (loans at the Cost Center level-ledger 2998)
 - Investment Program (ledger 12xx) – investments, but should fall to the bottom line so we in the units know those balances reside in our Cost Center

Resources & Guidance

Fund Balance Reports

- If users are using the Assignee Worktag to manage balances, then they should use the “Fund Balance by Assignee” report

Top of Mind Discussion | Fund Balances



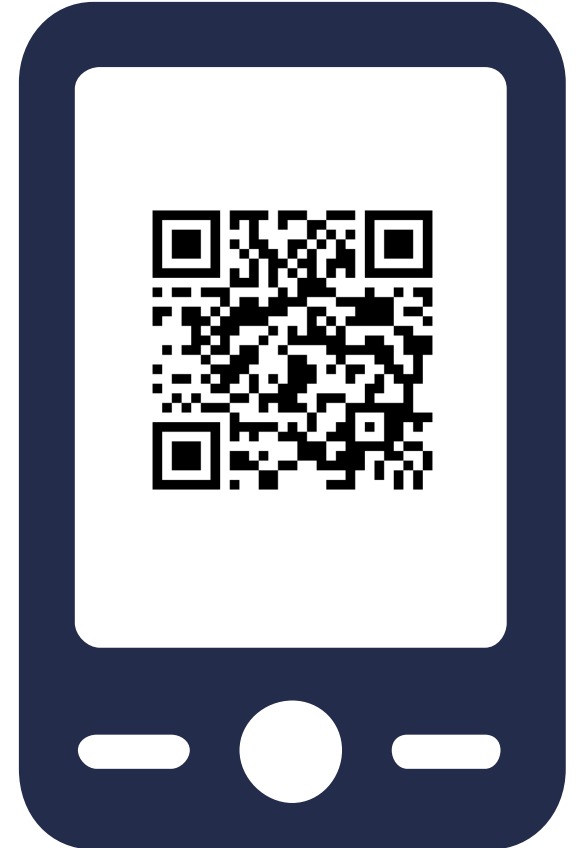
**We will be using the
Mentimeter app to capture
some of your responses today**

Scan the QR code with your
smart phone camera to respond

OR

Go to www.menti.com and
enter the code **7777 8277**

Note: When putting in the code above, remember to
put the space in between.



Reporting

Top of Mind Discussion | Reporting

Top of mind items/questions from stakeholders related to Reporting:

1. Quantity of data included in reports – users want a **limit to what is displayed**
2. **Report inventory** – a list of reports, a description of what data is included, and what these reports are used for

Resources & Guidance

Report Inventory

- [Day In The Life Of A Fiscal Administrator \(Reporting FAQ\)](#) – this guide matches up 1-2 reports with the most frequent daily questions that Fiscal Administrators and business officers need to address; offers a slimmed-down digest of go-to reports
- **Workday RAD in UBI** replaces the Research Admin Dashboard previously available
 - Provides **one-stop financial reporting** for post-award Sponsored Programs for Grants Managers and Analysts
 - Currently contains **Award Attributes, Grant Balances Available, and Expenditure Details**
 - Workday RAD will **evolve** to include additional features over the remainder of the fiscal year

Top of Mind Discussion | Reporting



**We will be using the
Mentimeter app to capture
some of your responses today**

Scan the QR code with your
smart phone camera to respond

OR

Go to www.menti.com and
enter the code **7777 8277**

Note: When putting in the code above, remember to
put the space in between.



Account Certification

Top of Mind Discussion | Account Certification

What is Account Certification?

- The process in Workday for **reconciling your accounts**

What's the rationale behind Account Certification?

- COSO Controls Framework would indicate **best practices involve reconciliation** of financial activity
- Supports the **ARMiCs** and **Annual Attestation process** and is foundational components of our control environment
- Supports **UVA Policy FIN-023: Reconciling Unit Accounting Records**
- Departments need to **review and ensure accurate accounting** for activity in their respective units

What ISN'T Account Certification?

- It's not a **consolidated P&L report** for your area's activity (although the Account Certification Details report can aid)
- It's NOT an **approval** – but it does provide the opportunity to review and then follow up with correcting actions – you can complete certifications with errors, as long as there is a remediation plan and documentation (notes)
- It is **not a direct replacement of Recon@** as the process and guidance may differ when preparing or approving certifications

How is Account Certification different from Recon@ ?

- **Users see the entire ledger** – not just “GA” Activity
- **Funding entries** and **Revenues** are now **more visible**
- With a flat Chart users see **both sides of the entry**, which can be confusing
- Departments' FDM structure can simplify or complicate things; the **more DNs and the more Cost Centers, the more Account Certifications** are required

Top of Mind Discussion | Account Certification

Top of mind items/questions from stakeholders related to Reporting:

1. Omission of **payroll, SIS details, and fund balance/budget vs actuals** in Account Certification view
2. Numerous **manual processes** (e.g., filtering to eliminate 0 ledger accounts and drilling into each line)
3. Confusion around **marking variances** and **filtering out 0 ledger account lines**

Enhancements we are exploring:

1. Hiding \$0 balances
2. Pre-populate certain ledger accounts
3. Memos on Journals
4. SIS detail – ideally via integrated reporting

Resources & Guidance

Account Certification View

- **Export the report to Excel** but still **keep the report up on Workday**; this will help you drill into transactions you need more information on. The downloaded excel sheet can also help to “track” what lines you reviewed; for more details refer to this [page](#)

Dashboard Time Limit

- To avoid losing your changes when reviewing Account Certification, click the “**Save for Later**” button

Account Certification Best Practices

- [Account Certification FAQ](#) provides common questions related to Account Certification along with answers provided by SMEs
- You **do not need to verify every line** if it was **approved beforehand**. If you see revenue ledger accounts for **Grants**, you can ignore these
- You will need to **reconcile Projects and other worktags** with funding source reclassification transactions; for guidance and details refer to this [page](#)
- Review the [Account Certification FAQ](#), [Workday Corrections Decision Tree](#), and other [Account Certification resources](#)

Top of Mind Discussion | Account Certification



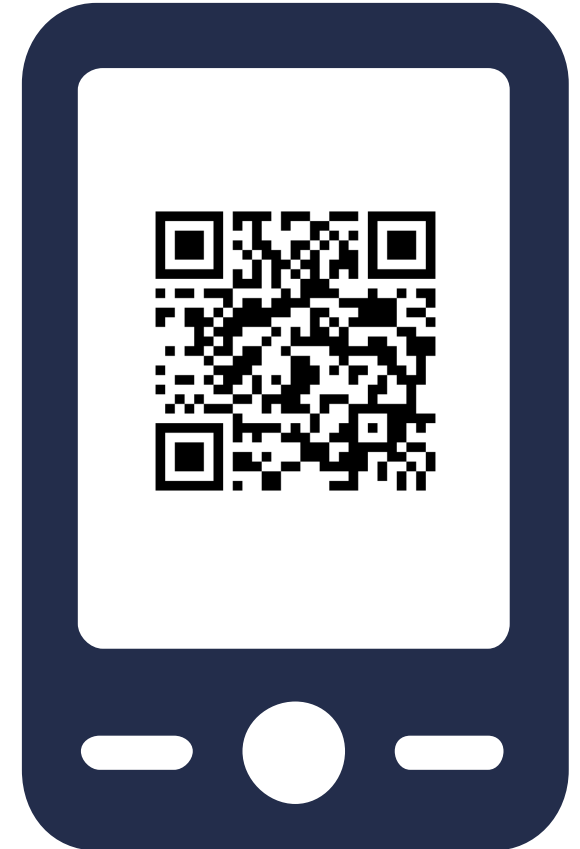
**We will be using the
Mentimeter app to capture
some of your responses today**

Scan the QR code with your
smart phone camera to respond

OR

Go to www.menti.com and
enter the code **7777 8277**

Note: When putting in the code above, remember to
put the space in between.



AskFinance

Top of Mind Discussion | AskFinance

Top of mind items/questions from stakeholders related to AskFinance:

1. When can I expect a response from UVAFinance? Does it vary by tier? At what point should users reach out to follow up on status?

The user success team strives for a **same-day response** to inquiries received before 4pm, Monday-Friday, and aims to **resolve or escalate cases within two business days**

2. How can I get my issue resolved or escalated more efficiently?

Provide as much detail as possible about the issue(s) you are experiencing; include the **worktags you are using** and any **resources you have already referenced** to aid you in the transaction; **attach images or other pertinent documents**

3. What is the best method to follow up or provide additional details on my support case?

Email follow-ups should be **sent in response to the autoreply** generated when you submitted your case or the last related message from UVAFinance; you may also call the solution center at **434-924-3400**

4. My case was closed by UVAFinance but I did not receive a response or the response I needed. How should I proceed?

Find the **original autoreply** for your case or the last related email you received and **send a reply noting your concern** with the case closure

Resources & Guidance

AskFinance Blog Post

- [Updates from the UVAFinance Solution Center](#) blog post provides FAQ related to AskFinance



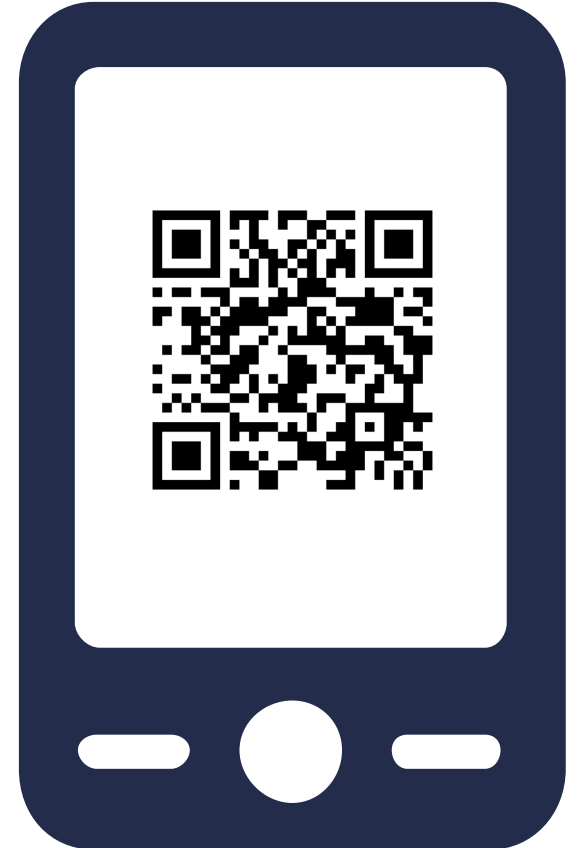
**We will be using the
Mentimeter app to capture
some of your responses today**

Scan the QR code with your
smart phone camera to respond

OR

Go to www.menti.com and
enter the code **7777 8277**

Note: When putting in the code above, remember to
put the space in between.





Compliance Helpline

Fiscal Administrators Meeting

November 2, 2022

Why is Compliance Reporting Important?

Healthy culture of compliance

- We can't investigate what we don't know

Everyone has a responsibility to report and cooperate with investigators

- Federal Sentencing Guidelines
- [UVA Code of Ethics](#)
- Compliance Policies

What are “Compliance Concerns”?

- Legal/regulatory noncompliance (federal, state, local, other)
- University policy violations
- Fraud and financial improprieties
- Research misconduct
- Conflicts of interest
- Disclosure of confidential information
- Inappropriate use of University resources

Where Should I Report My Concern?

- Tell your supervisor
- Contact the office responsible for that compliance area
- Alert the Assistant Vice President for Compliance
- Submit your report through the [Compliance Helpline](https://report.virginia.edu)

800-235-8700



report.virginia.edu

Compliance Helpline Webform

report.virginia.edu

UVA COMPLIANCE HELPLINE

To inform the University of any unethical behavior or policy violation, you may use the **UVA Compliance Helpline** to [submit a report](#) securely and confidentially (and anonymously, if desired). The compliance team in either the [Academic Division](#) or the [Health System](#) (based on the nature of the report) will receive your Helpline submission and will work with the relevant office to appropriately and respectfully investigate your concern.

UVA COMPLIANCE HELPLINE

Just Report It!
EOCR/Title IX, Student Affairs/ODOS, Clergy/Youth Protection

Respect @UVA
Employee Relations (HR)

Report a Barrier
ADA Coordinator

Guardian App and TipSubmit
UVA Police Department

Be Safe
UVA Health

Patient Experience
UVA Health

Compliance Reporting – Intake Methods



SafeGrounds Community

- Compliance – Academic Division and Medical Center
- Human Resources/Employee Relations
- Equal Opportunity and Civil Rights
 - Title IX
 - ADA
 - Discrimination/Harassment/Retaliation
- Clery Compliance/Youth Protection
- Threat Assessment Team
- Student Affairs/Dean of Students

UVA Compliance Office

Gary Nimax

Assistant VP for Compliance

nimax@virginia.edu

434-243-8992

Steve Sherman

Data & Compliance Analyst

steve@virginia.edu

434-924-3849

Email: compliance@virginia.edu

Website: compliance.virginia.edu

Reporting Options: report.virginia.edu

Looking Forward: Stabilization Updates



Looking Forward: Stabilization Updates | Non-Catalog Requisition

Issue: Currently, if a Procurement Shopper creates a **requisition for a non-catalog order in Jaggaer for both Goods and Services**, when the data integrates from Jaggaer to Workday, Workday **only allows Goods lines to flow**

Impact: Any invoice that contains a Service line will hit a **match exception** when matched to the Purchase Order in Workday

- There are currently **over 2,000 invoices** sitting in a **match exception status**
- **25%** of total match exceptions are the result of the Goods/Services mismatch issue
- This has caused **significant delays in invoice processing**

Identified Solution: The recommendation is to **transition to a hybrid approach**, utilizing Workday's non-catalog order process for both Goods and Service lines, and Jaggaer for catalog orders

Expected Outcomes

- Fewer invoice **match exceptions**
- Improved **payment turnaround** time to suppliers
- Reduced **manual invention** in invoice processing by both end users and PSDS staff
- Fewer **inquiries** and **Salesforce cases**
- Improved **visibility** of questionnaire responses to Buyers
- Clearer **procurement guidelines** (e.g., all non-catalog orders will be done directly in Workday)

Implications

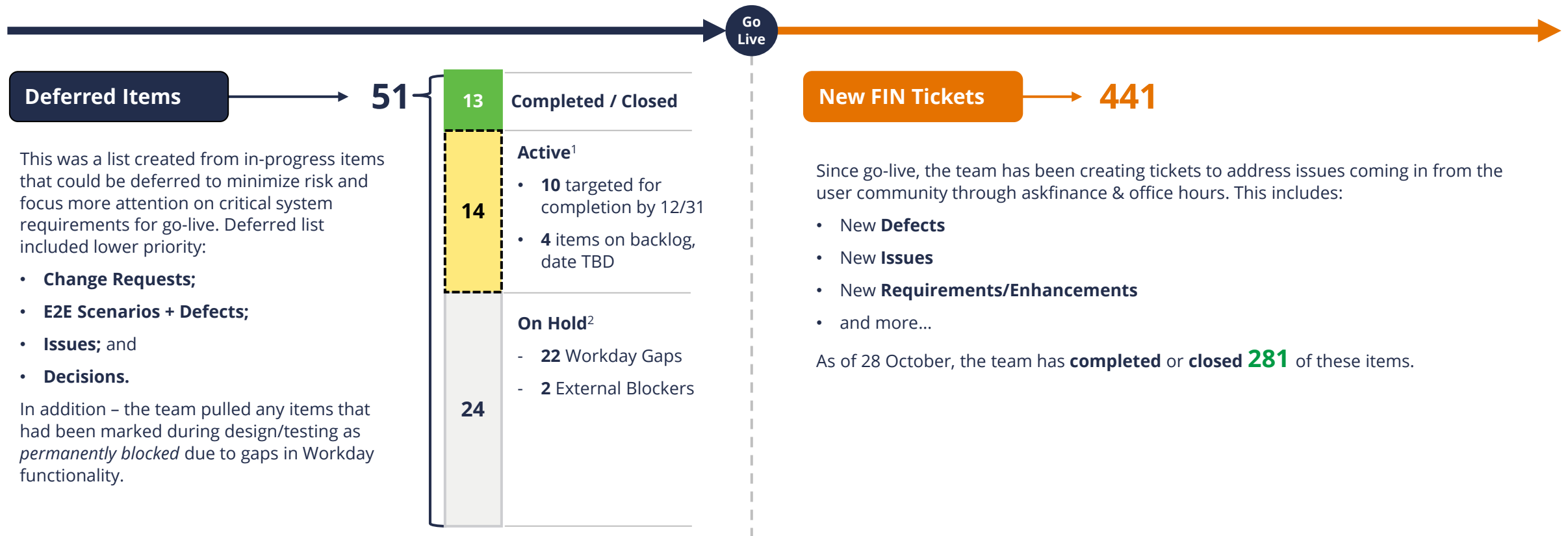
- Users will be required to complete the non-catalog requisition **questionnaire in Workday**. They will not have the ability to assign a cart. They must hold a Workday Procurement role
- A small number of users will need to be assigned the **Procurement Shopper role** in order to complete a non-catalog requisition
- If a user creates a non-catalog requisition and then punches out to Jaggaer to add a catalog line, the requisition will create **two separate purchase orders**

Next Steps

- Finalize decision
- Functional team will
 - Proceed with **configuration** changes
 - **Test** all changes
- OCM team will
 - Prepare **training materials**
 - **Communicate changes** that impact the user experience to impacted stakeholders

Looking Forward: Stabilization Updates | Deferred Items

In the weeks leading up to UVA's go-live for Financials, the project team **deferred any remaining in-progress items** to minimize the risk to cutover. Once go-live was complete, the team **resumed working these items** in order of priority. In addition, the FST team has been **addressing new issues** coming in via AskFinance and Office Hours.



Looking Forward: Stabilization Updates | Stakeholder Adoption

The team gathered and analyzed data from **qualitative** sources (20+ Focus Groups, 150 Office Hours sessions) and **quantitative** sources (Workday reports, communications metrics, Salesforce cases, WalkMe user interactions) to produce a **comprehensive analysis of the current state of user adoption**. Four **key themes** emerged from the adoption analysis:

Awareness



Overall, there are **high levels of awareness** around available **learning materials and engagement activities**. Overall, these activities have proven to be effective in raising stakeholder awareness of **system enhancements** and **support** available. **Limitations in the system's usability** due to conversion issues/processing backlog cause users to **doubt their awareness and understanding** of the system.

Workday FIN Knowledge & Competencies



Learning materials have enabled users to **build foundational knowledge** of Workday; **continuous improvement of materials** will help expand this knowledge. Engagement opportunities allow users to get their questions answered and **learn about new or unfamiliar system functionalities**. As users interact with the system by completing transactions and exploring new functionalities, their Workday **competency continues to expand**.

Alignment & Expectations



Stakeholders demonstrate a desire for **more recognition of the challenges they face** through **transparent communications**. Additional opportunities to engage with functional leads, trainers, and FST team leadership will likely address stakeholders' **desire for additional information**. Issues with accuracy of data cause stakeholders to **doubt the transparency of certain functionalities**.

Support & Collaboration

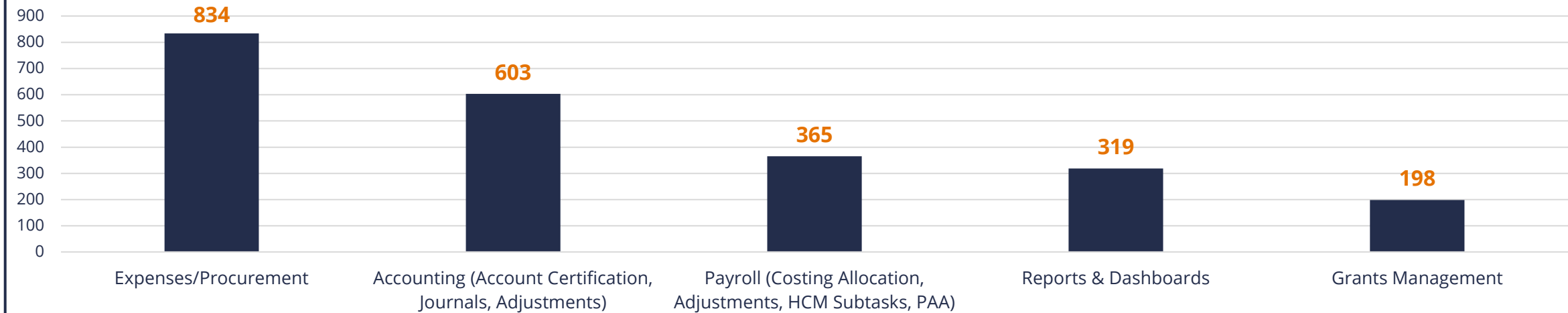


Stakeholders' active role in providing feedback to help continuously improve learning resources has encouraged **collaboration** and promoted **shared ownership of adoption activities**. Engagement opportunities have empowered stakeholders to **share the challenges their Schools and Units are facing** and **leverage their colleagues to problem solve**.

Looking Forward: Stabilization Updates | Stakeholder Adoption

Office Hours, which have been held regularly each week since July 11th, wrapped up this Monday, October 31st. A total of **217 Office Hours sessions** were facilitated during this timeframe; our trainers and facilitators supported **over 3,000 Office Hours attendees** by **answering questions, conducting live demos, providing resources, and facilitating collaborative discussions**. Thank you to those who facilitated and attended these sessions!

Five Most Highly Attended Office Hours, July-October



New Support Opportunity – 1:1 Time with a UVA Finance Trainer!

To continue to support our stakeholders as we go through this learning journey, instead of continuing open office hours, we will be offering **individual 1:1 time with a UVA Finance training team member in November and December** for assistance with **specific, situational questions**. Stakeholders can schedule a meeting directly on the [training page](#) by following the instructions under *Time with a Trainer*.

Looking Forward: Stabilization Updates | Learning Resources Updates

The Training Team **regularly monitors and updates** QRGs and other learning resources to ensure guidance provided is as clear, specific, and accurate as possible. The resources below have been **recently developed**:

Workday Financials Self-Paced Training Cheat Sheet

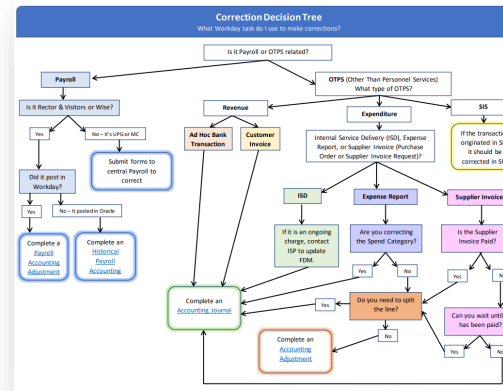
Training Materials | Self-Paced Training Cheat Sheet

Stakeholders can use this Cheat Sheet to **determine which course(s) will best address their Workday Financials questions**. These courses are available as self-paced training and can be searched by title in Workday Learning.

Course	Content Covered	Aligned Roles	Course Materials
Account Certification	<ul style="list-style-type: none"> Account Certification process Prepare and/or Approve an Account Certification Remediate variances upon identification Reporting capabilities available for Preparers & Approvers of Account Certification 	Preparers and approvers of account certification	<ul style="list-style-type: none"> Course Slides Self-Paced Training
Accounting Journals & Accounting Adjustments	<ul style="list-style-type: none"> Perform an Accounting Adjustment Create an Accounting Journal manually and in bulk View and edit a journal entry Reverse a journal entry Reporting capabilities available for Financial Accounting 	Accountant	<ul style="list-style-type: none"> Course Slides Self-Paced Training
Ad Hoc Bank Transactions	<ul style="list-style-type: none"> Submit an Ad Hoc Bank Transaction Review and approve Ad Hoc Bank Transactions for Expenditure Credits, Department Deposits, and Merchant Accounts Reporting capabilities available to the Cost Center Deposit Specialist 	Cost Center Specialist	<ul style="list-style-type: none"> Course Slides Self-Paced Training
Approving Transactions as a Cost Center Manager	<ul style="list-style-type: none"> Key tasks for approval as a Cost Center Manager Reviews of requests prior to approval 	Cost Center Manager	<ul style="list-style-type: none"> Course Slides Self-Paced Training
Customer Accounts	<ul style="list-style-type: none"> Create a customer, add and edit customer contacts, change customer summary Customer invoice adjustment vs. credit and rebill an invoice Understand how to create, print, email, and adjust a Customer Invoice Create, print and email Customer Documents (including Consolidated Customer Invoice and Customer Statements) Request creation of a Customer Portal Account Reporting capabilities available for Customer Accounts 	Customer Billing Specialist, Customer Contract Specialist	<ul style="list-style-type: none"> Course Slides Self-Paced Training

UVA Finance Training | Workday Finance Training | UVA Finance (vtrg.virginia.edu)

Workday Corrections Decision Tree



What is it? A decision tree that maps out correction paths for certain Workday Financials tasks

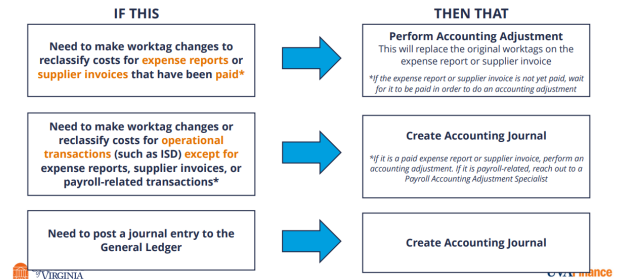
Who is it for? Any end user with a finance role

Access [here](#)

Accounting Cheat Sheet

Accounting | If This, Then That (1 of 2)

This cheat sheet is designed to help accountants determine when to perform an accounting adjustment versus creating or reversing a journal in Workday.



What is it? A resource designed to help determine when to perform an accounting adjustment

versus creating or reversing a journal in Workday

Who is it for? Users holding the Accountant role

Access [here](#)

A sepia-toned photograph of a classical building, likely a university or government structure, featuring a prominent circular portico with columns and a central statue on a pedestal. The scene is set against a sky with scattered clouds. A white rectangular box is overlaid on the left side of the image, containing the text "Thank you!".

Thank you!